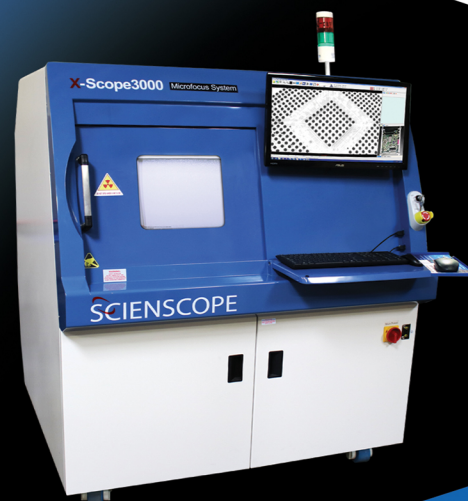


X-SCOPE

3000 X-RAY INSPECTION SYSTEM

SCIENSCOPE
INTERNATIONAL



X-Scope 3000 X-Ray Inspection System

The X-SCOPE 3000 X-Ray Inspection System is the latest addition to the X-Scope platform. Based on the very popular X-SCOPE 2000, it adds a larger working area, more power and can use the same 130kV X-Ray source found in our flagship model, X-SPECTION 6000.

Applications

- | | |
|-------------------------------------|-------------------------|
| ✓ Multilayer PCBs | ✓ Molded plastic |
| ✓ BGA, QFN, wire bond, etc | ✓ Automotive assemblies |
| ✓ Semiconductor | ✓ Medical devices |
| ✓ Over molded electrical connectors | ✓ Pharmaceuticals |
| ✓ Encapsulated components | ✓ Ceramics |
| ✓ Aluminum die casting | ✓ Agriculture |

System Details



FEATURING

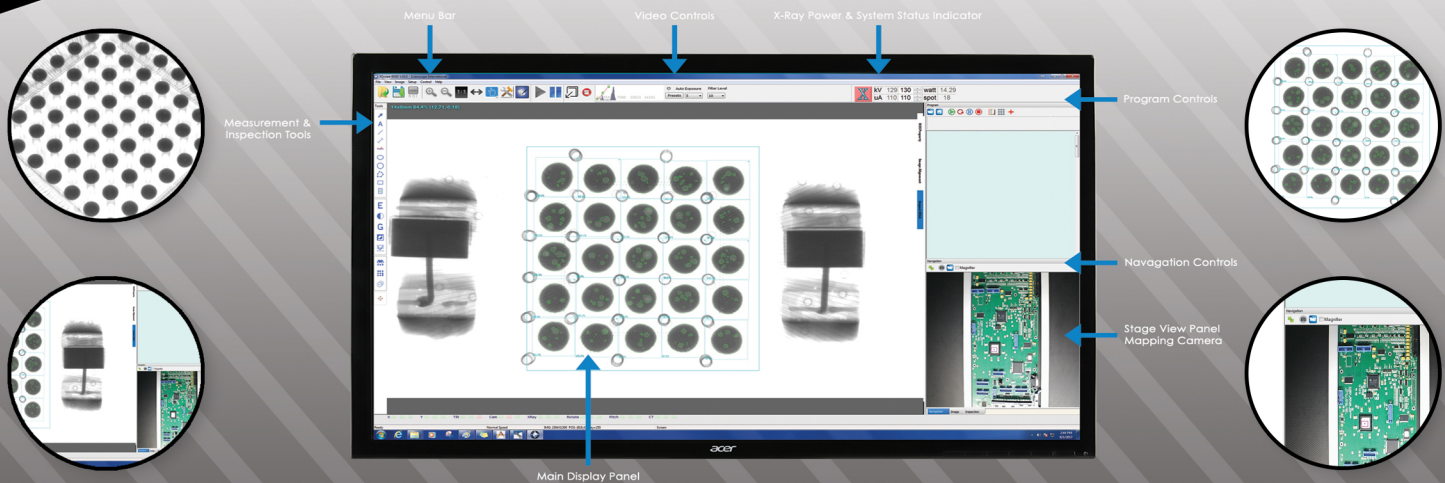
- Fully integrated, 110 or 130kV high power micro focus closed X-ray tube
- Spot size down to 5µ
- 4"x3" high resolution CMOS digital flat panel image detector
- 50° detector tilt for oblique angle viewing
- 25.4" x 19.5" Inspection area
- Color mapping camera with zoom window provides easy location and identification of faults
- Z axis movement of the x-ray tube and detector
- Computer controlled kV and mA settings
- Computer controlled variable speed X-Y stage
- Simple point and click, intuitive GUI provides access to create advanced inspection routines
- Industrial PC with Windows 7 PRO, 24" LCD flat panel display

All software tools standard including (but not limited to)

- BGA Void detection and automatic calculations
- Easy macro recording for intuitive step and repeat programming
- Various measuring tools for radius, area, perimeter, etc.
- Industrial PC with Windows 7 PRO, 24" LCD flat panel display

PRODUCT SPECIFICATIONS

**HIGH PERFORMANCE AND HIGH POWER AT
AN AFFORDABLE PRICE!**



MACHINE SPECIFICATIONS

X-Ray Tube

- ✓ X-Ray Source: Micro-focus, integrated (closed)
- ✓ Operating voltage: 110kV or 130kV
- ✓ Maximum Power: 16 W 50-130kV
- ✓ Minimum Focal Spot Size: 5 Micron
- ✓ Magnification up to: 900x

Digital Flat Panel Detector

- ✓ Grayscale: 14 bit (16,384 shades of grayscale)
- ✓ Speed: 40FPS
- ✓ Resolution: 49.5µm or 99µm
- ✓ Detector Size: 4" x 3" high resolution, 4" x 3" ultra-high resolution or 5" x 5" high resolution

Work Area

- ✓ Sample Table Size: 645mm x 496mm / 25.4" x 19.5"
- ✓ Inspection Area: 595mm x 460mm / 23.4" x 18"
- ✓ Oblique Angle View: +50°

General Machine Specs

- ✓ Dimensions: 53.5" x 53.5" x 66" (81" including light tower)
1358mm x 1358mm x 1677mm (2057mm including light tower)
- ✓ Weight: 1400kg /3080lbs (steel lead welded construction)
- ✓ Power: 110-230 VAC 50/60 Hz 300Wh (auto switching)
- ✓ Industrial PC: Microsoft Windows 7 PRO (64-bit)

 **24/7 SERVICE HOTLINE**
1(800)216-1800

THIS SYSTEM INCLUDES A 1 YEAR WARRANTY ON PARTS AND LABOR

Compliance

THE SCIENSCOPE X-SCOPE X-RAY INSPECTION SYSTEMS MEET THE FDA-CDRH REGULATION CFR 21.1020.40 SUBCHAPTER J FOR CABINET X-RAY SYSTEMS. THE FDA-CDRH STANDARD FOR CABINET X-RAY SYSTEMS STATES THAT RADIATION EMISSIONS WILL NOT EXCEED 50 MICRO R/HR 5 CM FROM ANY EXTERNAL SURFACE. THE X-SCOPE X-RAY INSPECTION SYSTEMS TYPICALLY HAVE A RADIATION EMISSION READING OF LESS THAN 20 MICRO R/HR 5 CM FROM ANY EXTERNAL SURFACE. ALL SCIENSCOPE X-SCOPE X-RAY SYSTEMS HAVE A CE APPROVAL. SCIENSCOPE X-SCOPE X-RAY SYSTEMS ARE CLASSIFIED AS "CABINET X-RAY SYSTEMS" AND REQUIRE NO EXTERNAL RADIATION SHIELDING, WELDED STEEL / LEAD-STEEL CONSTRUCTION, NO VISIBLE SHIELDING.

FDA ACCESSION NUMBER: 0710198

CE REFERENCE NUMBER: CN.CE.0402-05.09

