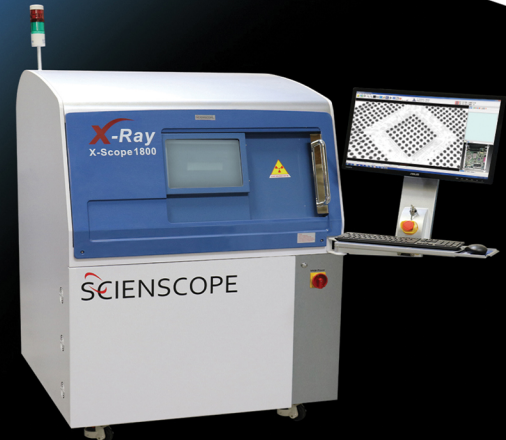


# X-SCOPE

1800 X-RAY INSPECTION SYSTEM

SCIENSCOPE  
INTERNATIONAL



## X-Scope 1800 X-Ray Inspection System

The X-SCOPE 1800 X-Ray Inspection System is an entry level machine with high level features. A micro-focus x-ray source and CMOS digital flat panel image detector with tilting for oblique angle views are standard, all at an affordable price.

### Applications

- |                                     |                         |
|-------------------------------------|-------------------------|
| ✓ Multilayer PCBs                   | ✓ Molded plastic        |
| ✓ BGA, QFN, wire bond, etc.         | ✓ Automotive assemblies |
| ✓ Semiconductor                     | ✓ Medical devices       |
| ✓ Over molded electrical connectors | ✓ Pharmaceuticals       |
| ✓ Encapsulated components           | ✓ Ceramics              |
| ✓ Aluminum die casting              | ✓ Agriculture           |

### System Details



#### FEATURING

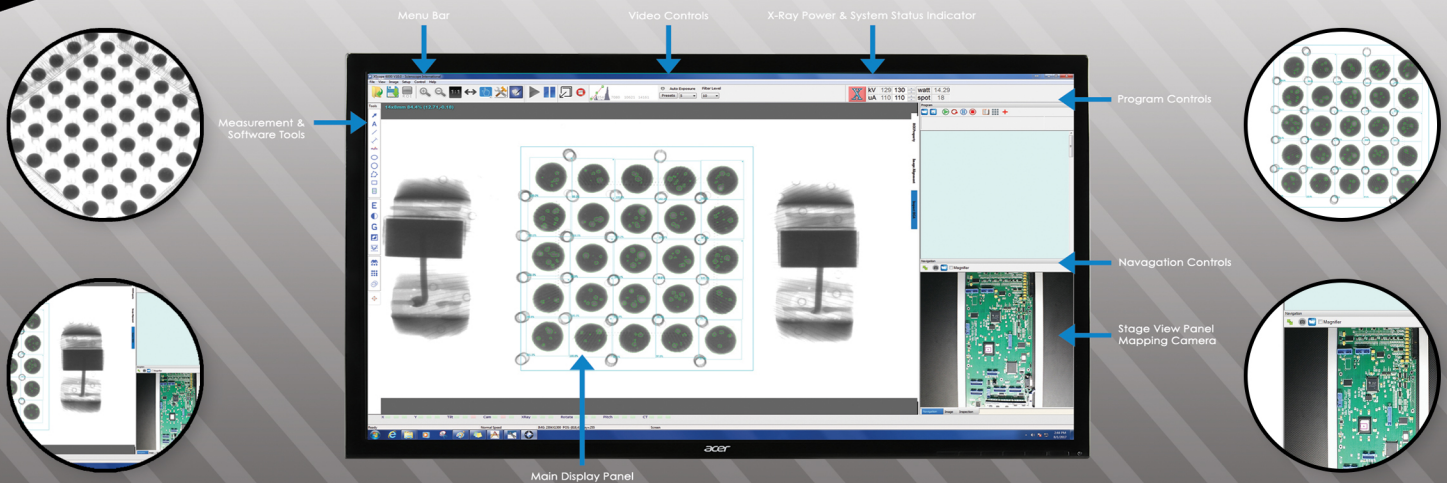
- Fully integrated, 90kV high power micro-focus closed x-ray tube
- Spot size down to 10 $\mu$  from 5 $\mu$
- 4"x3" high resolution CMOS digital flat panel image detector
- 30° detector tilt for oblique angle viewing
- 19.6" x 14.75" Inspection area
- Color mapping camera with zoom window provides easy location and identification of faults
- Z axis movement of the x-ray tube and detector
- Computer controlled kV and mA settings
- Computer controlled variable speed X-Y stage
- Simple point and click, intuitive GUI provides access to create advanced inspection routines

All software tools standard including (but not limited to)

- BGA Void detection and automatic calculations
- Easy macro recording for intuitive step and repeat programming
- Various measuring tools for radius, area, perimeter, etc.
- Industrial PC with Windows 7 PRO, 24" LCD flat panel display

# PRODUCT SPECIFICATIONS

**FULL FEATURE PERFORMANCE AT AN  
ENTRY LEVEL PRICE!**



## MACHINE SPECIFICATIONS

### X-Ray Tube

- ✓ X-Ray Source: Micro-focus, integrated (closed)
- ✓ Operating voltage: 90kV
- ✓ Current: 0.256mA / 0.18mA
- ✓ Minimum Focal Spot Size: 10 Micron
- ✓ Magnification up to: 500x

### Digital Flat Panel Detector

- ✓ Grayscale: 14 bit (16,384 shades of grayscale)
- ✓ Speed: 30FPS
- ✓ Resolution: 99µm
- ✓ Detector Size: 4" x 3" high resolution

### Work Area

- ✓ Sample Table Size: 496mm x 375mm / 19.5" x 14.75"
- ✓ Inspection Area: 450mm x 355 / 17.75" x 14"
- ✓ Oblique Angle View: ±30°

### General Machine Specs

- ✓ Dimensions: 43.3" x 43.3" x 55" (70" including light tower)  
1100mm x 1100mm x 1400mm (1800mm including light tower)
- ✓ Weight: 800kg / 1760 lbs. (steel lead welded construction)
- ✓ Power: AC 110 – 230 VAC 50/60 Hz
- ✓ Industrial PC: Microsoft Windows 7 PRO (64-bit)

**24/7 SERVICE HOTLINE**  
**1(800)216-1800**

THIS SYSTEM INCLUDES A 1 YEAR WARRANTY ON PARTS AND LABOR

### Compliance

THE SCIENSCOPE X-SCOPE X-RAY INSPECTION SYSTEMS MEET THE FDA-CDRH REGULATION CFR 21.1020.40 SUBCHAPTER J FOR CABINET X-RAY SYSTEMS. THE FDA-CDRH STANDARD FOR CABINET X-RAY SYSTEMS STATES THAT RADIATION EMISSIONS WILL NOT EXCEED 50 MICRO R/HR 5 CM FROM ANY EXTERNAL SURFACE. THE X-SCOPE X-RAY INSPECTION SYSTEMS TYPICALLY HAVE A RADIATION EMISSION READING OF LESS THAN 20 MICRO R/HR 5 CM FROM ANY EXTERNAL SURFACE. ALL SCIENSCOPE X-SCOPE X-RAY SYSTEMS HAVE A CE APPROVAL. SCIENSCOPE X-SCOPE X-RAY SYSTEMS ARE CLASSIFIED AS "CABINET X-RAY SYSTEMS" AND REQUIRE NO EXTERNAL RADIATION SHIELDING, WELDED STEEL / LEAD-STEEL CONSTRUCTION, NO VISIBLE SHIELDING.

FDA ACCESSION NUMBER: 0710198

CE REFERENCE NUMBER: CN.CE.0402-05.09



**1(800)216-1800**  
**info@sciencescope.com**

**5751 Schaefer Ave**  
**Chino, CA 91710, USA**

**WWW.SCIENSCOPE.COM**