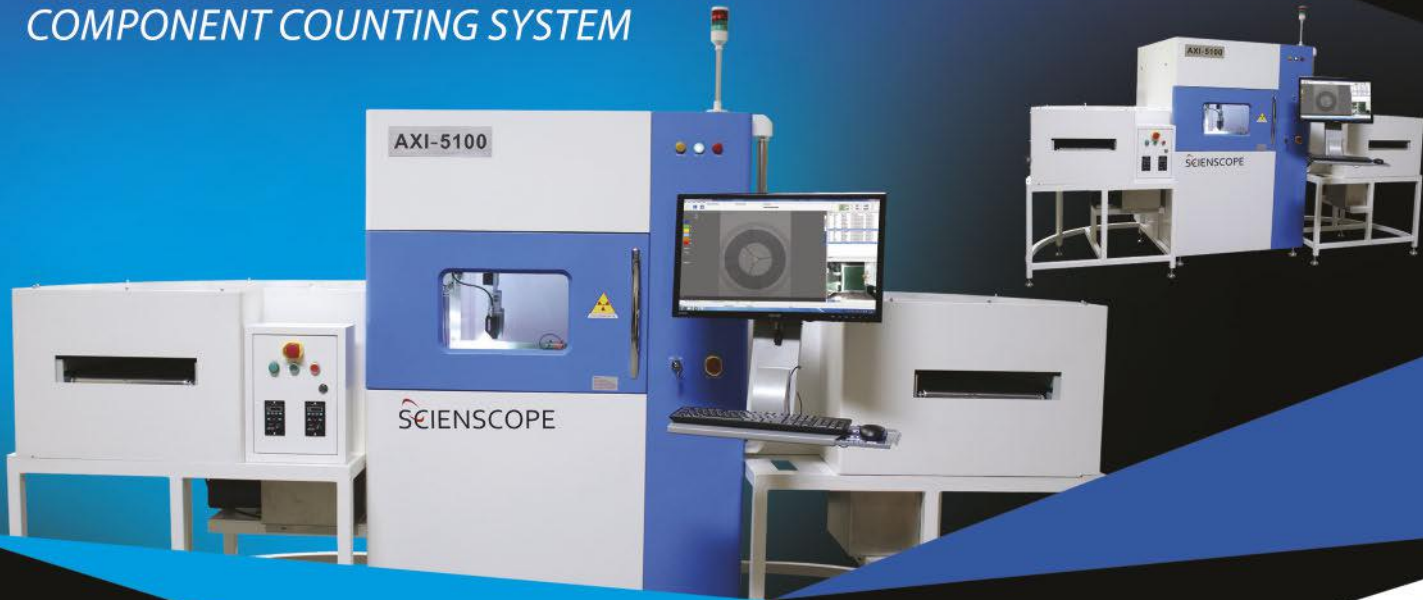


AXI-5100C

COMPONENT COUNTING SYSTEM



System Details

AXI-5100c Component Counting System

The ScienScope AXI-5100c is the most advanced, automated component counting system in the world. This automated system communicates with data management providing complete inventory control and by using an inline integrated conveyor system, it counts components faster than any system on the planet. Save time, save money, reduce labor and avoid the dreaded "line down" scenario due to lack of a component.

Applications

- ✓ JEDEC Trays
- ✓ 7", 13" and 15" Reels
- ✓ BGA Ball Count
- ✓ Loose Wound Components
- ✓ Cut Strips
- ✓ Copper Splice
- ✓ Sealed ESD Bags
- ✓ Tightly Wound Components
- ✓ Desiccant Penetrable



**SCAN THIS CODE
WITH YOUR SMART PHONE**

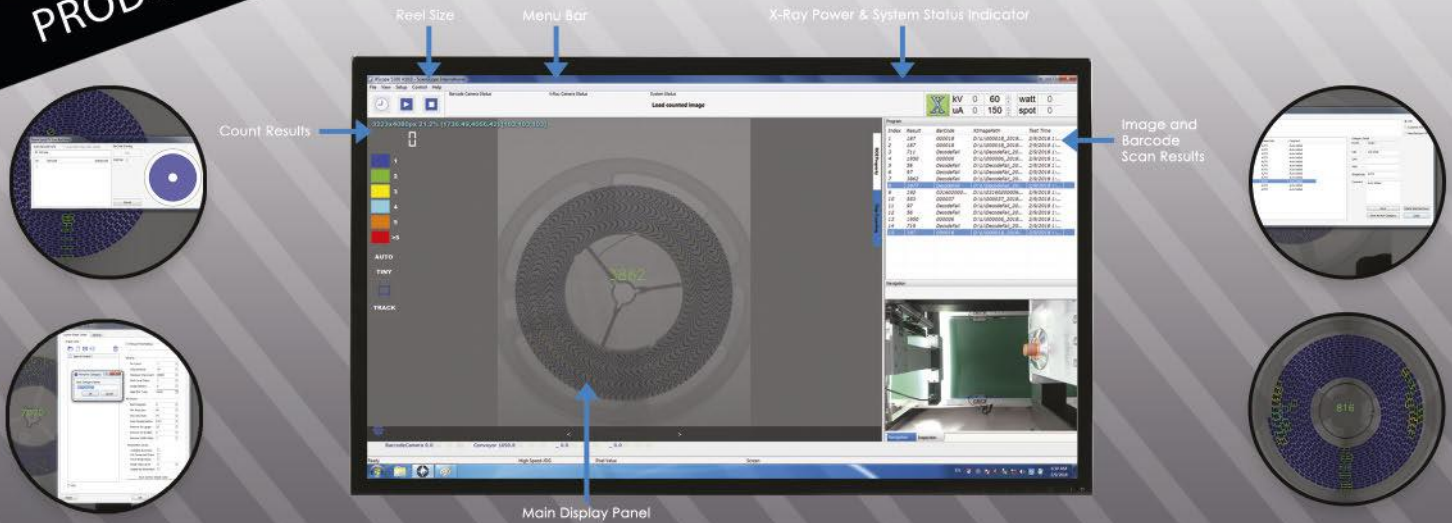


FEATURING

- Fast, Intuitive, user friendly software interface with 99.9% accuracy
- Scanning of 7"-15" reels
- Scanning of JEDEC trays and counting of BGA balls
- Scanning of loose wound components or tightly wound components
- Scanning of sealed ESD bags
- Built in library with automatic storage
- Automatic continuous feeding and positioning
- High-Speed 8k line scan camera
- Smart Reader that automatically acquires one dimensional or two-dimensional code and material height, size, type and other information
- Industrial PC: Microsoft Windows 7 Pro (64-bit)

PRODUCT SPECIFICATIONS

**WORLDS FASTEST COMPONENT COUNTER
THE FUTURE OF INVENTORY MANAGEMENT!**



MACHINE SPECIFICATIONS



Technical Operation

- ✓ Compatible Reel Sizes: 7"-15" reel with reel height up to 32mm
- ✓ Minimum Component Size: 0201/01005"
- ✓ Count Accuracy: >99.9%
- ✓ Types of Inspection: Standard SMT and TH, Standard reels up to 15" diameter, Cut Strips, ESD Bags, JEDEC Trays and BGA Ball Count and more.
- ✓ Automatic: height detection, reel size detection and barcode scanning
- ✓ Label Printing: Software interface for automatic label printing of barcodes and or component count results. (label printer optional)

**THIS SYSTEM INCLUDES A 1 YEAR WARRANTY
ON PARTS AND LABOR**

X-Ray Tube

- ✓ X-Ray Source: Micro-focus 5um, integrated (closed)
- ✓ Operating voltage: 80kV Maximum

Digital Flat Panel Detector

- ✓ Grayscale: 16 bit (65,536 shades of grayscale)
- ✓ Resolution: 8k

General Machine Specs

- ✓ Dimensions: 9.6'x 4.1'x 7.1' / 2930mm x 1255mm x 2180mm
- ✓ Weight: 2400kg / 5291 lbs.
- ✓ Power: AC 220V 3.0KW
- ✓ Industrial PC: Microsoft Windows 7 PRO (64-bit)

Compliance

THE SCIENSCOPE X-SCOPE X-RAY INSPECTION SYSTEMS MEET THE FDA-CDRH REGULATION CFR 21 1020.40 SUBCHAPTER J FOR CABINET X-RAY SYSTEMS. THE FDA-CDRH STANDARD FOR CABINET X-RAY SYSTEMS STATES THAT RADIATION EMISSIONS WILL NOT EXCEED 50 MICRO R/HR 5 CM FROM ANY EXTERNAL SURFACE. THE X-SCOPE X-RAY INSPECTION SYSTEMS TYPICALLY HAVE A RADIATION EMISSION READING OF LESS THAN 20 MICRO R/HR 5 CM FROM ANY EXTERNAL SURFACE. ALL SCIENSCOPE X-SCOPE X-RAY SYSTEMS HAVE A CE APPROVAL. SCIENSCOPE X-SCOPE X-RAY SYSTEMS ARE CLASSIFIED AS "CABINET X-RAY SYSTEMS" AND REQUIRE NO EXTERNAL RADIATION SHIELDING. WELDED STEEL / LEAD-STEEL CONSTRUCTION, NO VISIBLE SHIELDING.

FDA ACCESSION NUMBER: 0710198

CE REFERENCE NUMBER: CN.CE.0402-05.09

