

AXC-800 7"

COMPONENT COUNTING SYSTEM



AXC-800 7"

Component Counting System

The Scienscope AXC-800 7" makes inventory management and component counting fast, accurate and easy. Simply place reels in the system, close the door and the count begins automatically. 40 seconds later it has completed the task of counting four 7" reels. Save time, save labor, save money and avoid the dreaded "line down" scenario due to lack of a component.

Applications

- 7" Reels
- Loose Wound Components
- Tightly Wound Components
- Desiccant Penetrable
- Cut Strips
- Copper Splice
- Sealed ESD Bags

System Details



FEATURING

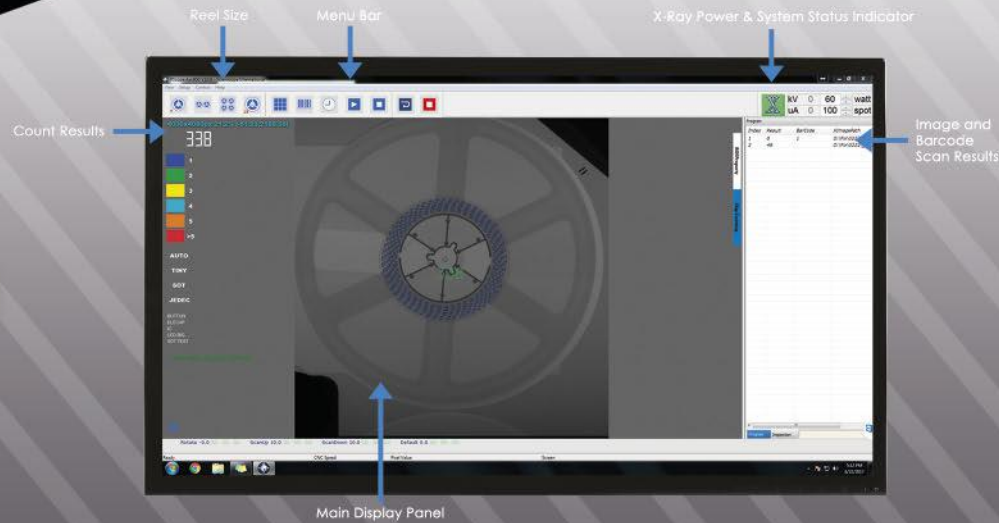
- Fast, Intuitive, user friendly software interface with 99.9% accuracy
- Scanning of (4) 7" reels simultaneously
- Scanning of loose wound components or tightly wound components
- Scanning inside ESD bags
- Built in library
- Small footprint
- Industrial PC: Microsoft Windows 7 Pro (64-bit)



**SCAN THIS CODE
WITH YOUR SMART PHONE**



WELCOME TO THE FUTURE OF
COMPONENT COUNTING!



MACHINE SPECIFICATIONS



Technical Operation

- ✓ Compatible Reel Sizes: (1-4) 7" reels
- ✓ Minimum Component Size: 01005"
- ✓ Count Accuracy: >99.9%
- ✓ Cycle Time: (1) 7" reel approximately 7-10 seconds, (4) 7" reels approximately 35-40 seconds
- ✓ Types of Inspection: Standard SMT, Standard reels, Cut Strips and ESD Bags
- ✓ Barcode Reader: Software interface for 1D or 2D hand-held barcode reading (reader optional)
- ✓ Label Printing: Software interface for automatic label printing of barcodes / component count results. (Label printer optional)

THIS SYSTEM INCLUDES A 1 YEAR WARRANTY ON PARTS AND LABOR

X-Ray Tube

- ✓ X-Ray Source: Micro-focus, integrated (closed)
- ✓ Operating voltage: 80kV

Line Scan

- ✓ Grayscale: 16 bit (65,536 shades of grayscale)
- ✓ Resolution: 8k

General Machine Specs

- ✓ Dimensions: 30" x 30" x 34" / 750mm x 750mm x 856mm
- ✓ Weight: 450kg /990 lbs.
- ✓ Power: AC 110 – 220 VAC 50/60 Hz 0.8kW
- ✓ Industrial PC: Microsoft Windows 7 PRO (64-bit)

Compliance

THE SCIENSCOPE X-SCOPE X-RAY INSPECTION SYSTEMS MEET THE FDA-CDRH REGULATION CFR 21 1020.40 SUBCHAPTER J FOR CABINET X-RAY SYSTEMS. THE FDA-CDRH STANDARD FOR CABINET X-RAY SYSTEMS STATES THAT RADIATION EMISSIONS WILL NOT EXCEED 50 MICRO R/HR 5 CM FROM ANY EXTERNAL SURFACE. THE X-SCOPE X-RAY INSPECTION SYSTEMS TYPICALLY HAVE A RADIATION EMISSION READING OF LES THAN 20 MICRO R/HR 5 CM FROM ANY EXTERNAL SURFACE. ALL SCIENSCOPE X-SCOPE X-RAY SYSTEMS HAVE A CE APPROVAL. SCIENSCOPE X-SCOPE X-RAY SYSTEMS ARE CLASSIFIED AS "CABINET X-RAY SYSTEMS" AND REQUIRE NO EXTERNAL RADIATION SHIELDING. WELDED STEEL / LEAD-STEEL CONSTRUCTION, NO VISIBLE SHIELDING.

FDA ACCESSION NUMBER: 0710198

CE REFERENCE NUMBER: CN.CE.0402-05.09

